

政府航运政策制定的智库

Government's maritime policy think tank

港航企业发展决策的依托

Industry players' decision making advisor



上海国际航运研究中心

Shanghai International Shipping Institute (SISI)



上海国际航运研究中心简介

上海国际航运研究中心 于2008年7月14日正式成立，时任上海市委副书记、市长韩正发来贺信，交通运输部领导与上海市政府领导共同为“研究中心”成立揭牌。

上海国际航运研究中心 由21家单位共同发起，挂靠上海海事大学。第一届理事长单位为中国海运（集团）总公司，第二届理事长单位为上海国际港务（集团）股份有限公司，副理事长单位由中国海运（集团）总公司、上海组合港管委会办公室、上海海事局、上海市教育委员会、上海市交通委员会、上海市虹口区人民政府、武汉新港管理委员会、交通运输部科学研究院、交通运输部规划研究院、交通运输部水运科学研究院、中远集装箱运输有限公司、中国外运华东有限公司、上海市锦江航运有限公司、上海航运交易所、中国港口协会、上海船东协会、上海市国际货运代理行业协会、世界海事大学、上海海事大学、上海交通大学、宁波大学、上海对外经贸大学等22家单位组成，截至2015年9月理事单位有近400家。

上海国际航运研究中心 以上海国际航运中心建设为依托，广泛联络国际航运组织、企业和院校，凝聚国内外一流专家，搭建国际航运研究平台，跟踪全球航运发展的新理念、新技术、新趋势和新制度，把握国际航运市场变化的脉搏，为中国航运事业的发展做出贡献。

上海国际航运研究中心 是国际航运业发展的研究和咨询机构，为政府和国内外企业与航运机构等提供决策咨询和信息服务。

上海国际航运研究中心 实行开放式管理，广泛吸收政府、企业、大学、研究机构、行业协会、国际组织共同参与，搭建产学研合作的平台。

上海国际航运研究中心 是上海市第一批高校知识服务平台——高级战略研究中心，是上海高校人文社会科学重点研究基地。2014年被列为上海市高校协同创新中心。



上海国际航运研究中心 成为政府重要智库。2012年8月，交通运输部和上海市人民政府签署《交通运输部、上海市政府加快推进国际航运中心建设深化合作》备忘录，明确共同支持上海国际航运研究中心发展，成为上海建交委（现上海市交通委）和上海海事大学共建单位。2015年4月，交通运输部翁孟勇副部长专程调研上海国际航运研究中心发展。



Shanghai International Shipping Institute (SISI) Introduction

July 14, 2008 witnessed the founding of Shanghai International Shipping Institute (SISI) inaugurated by government officials from Ministry of Transport (MOT) and Shanghai Municipality. Han Zheng, the then Deputy Secretary of the CPC Shanghai Municipal Committee and Mayor of Shanghai sent a letter of congratulations.

SISI, affiliated to Shanghai Maritime University, is launched by 21 council members. The first session council chair unit was China Shipping (Group) Company. The second session council chair unit is Shanghai International Port (Group) Co. Ltd, while vice council chair unit comprises 22 institutions including China Shipping (Group) Company, Shanghai Group Port Administration Committee, Shanghai Maritime Safety Administration, Shanghai Municipal Education Commission, Shanghai Municipal Transport Commission, Hongkou District People's Government, Wuhan New Port Administration Committee, China Academy of Transportation Sciences, Transport Planning and Research Institute (affiliated to China's Ministry of Transport, hereafter referred to as MOT), China Waterborne Transport Research Institute, COSCO Container Lines Co. Ltd, Sinotrans Eastern Co. Ltd, Shanghai Jinjiang Shipping Co. Ltd, Shanghai Shipping Exchange, China Ports Association, Shanghai Shipowners' Association, Shanghai Freight Forwarders Association, World Maritime University, Shanghai Maritime University, Shanghai Jiaotong University, Ningbo University, Shanghai University of International Business and Economics, etc. The number of our registered council members hit nearly 400 as of September 2015.

Against the backdrop of Shanghai international shipping centre construction, SISI endeavors to contribute its share to China's maritime industry and Shanghai's rise as a maritime capital by establishing extensive ties with international maritime organizations, companies and colleges, networking top experts via our research platform which tracks fresh concept, technology and trend on the global maritime scene.

SISI is an international maritime consultation and research institute providing government agencies and industry players with decision-making information and consultation service.

SISI is open to government agencies, port authorities, maritime companies, educational institutions, research institutes, industrial associations and organizations etc, integrating efforts in maritime production, study and research.

SISI is one of the earliest institutions entitled Shanghai University Knowledge Service Platform&Center for Strategic Studies and Key Research Institute of Humanities and Social Sciences. In 2014, SISI was recognized as Collaborative Innovation Center of Shanghai University.

SISI serves as a key government think tank. In August 2012, Ministry of Transport (MOT) and Shanghai Municipal People's Government signed a Memorandum on Deepening Cooperation to Accelerate Shanghai's Rise as an International Shipping Center which specifies that the two parties will work together to support Shanghai's development into an international shipping center. Since then, SISI was co-sponsored by Shanghai Maritime University and Shanghai Municipal Transport Commission. Weng Mengyong, vice minister of MOT visited SISI in April, 2015.



三大主要功能

决策咨询

分析和把握港口和航运业发展的脉络，提供港口与航运企业发展的咨询意见，成为政府部门航运发展的决策智库，打造中国航运发展的咨询平台，成为全球知名航运咨询机构。

信息发布

收集、统计、分析、整理航运、港口、海事、航空、航运金融、海运贸易、海事司法等信息；定期发布国际和中国的航运市场分析报告、全球航运发展报告、全球港口发展报告、中国航运景气指数、全球航空发展报告、中国航运金融发展报告、中国邮轮发展报告、中国邮轮市场发展报告以及上海航运政策与法律发展白皮书等，拥有中国航运数据库及港航大数据实验室，举办国际论坛，搭建国际航运信息发布平台。

人才服务

搭建开放式的高水平国际航运交流平台，联络和吸引世界航运界一流专家学者和企业家共同参与研究。举办高端航运人才培养，提供开放式讲座，建立青年教师践习基地、研究生产学研培养基地和大学生创新基地，营造航运人才集聚平台。



Three Main Functions

Decision-making Consultation

Analyze and grasp the growing trend of shipping and port industry; provide sound proposals for government agencies as well as shipping and port enterprises; become instrumental as government's maritime policy think tank and industry players' advisor; and strive for a world-famous consultancy specializing in shipping.

Information Release

Collect and compile/analyze statistics and information regarding shipping and port business, aviation, shipping finance, seaborne trade, maritime judicature etc; publish regular reports on international and domestic shipping market as well as global port industry, and release China Shipping Prosperity Index; publish Global Aviation Industry Development Report, China Shipping Finance Development Report, China Cruise Industry Development Report, China Cruise Market Development Report, Shanghai Shipping Policy and Law Development White Paper, etc.; launch China Shipping Database and Shipping & Port Big Data Laboratory; host international shipping and port conferences.

Talent Service

Set up open platform for global shipping communications and exchanges; network with top shipping experts, scholars and entrepreneurs and integrate their expertise in shipping research; and offer shipping talent training programs and lectures; establish bases for young teachers' practice, postgraduates' cultivation and college students' innovation to create a platform for the gathering of shipping talents.





主要任务

- 承担国家、各省市和上海市有关港口、航运方面的研究项目，着重研究航运中心建设问题；接受政府和企业有关港口和航运方面的咨询，向政府主管部门建言献策，组织跨国合作研究。
- 跟踪国内外航运市场动态，专注航运市场分析，预测航运市场发展趋势、全球港口发展动态，发布中国航运景气指数，出版相关的中英文报告，提供航运市场咨询服务。
- 为国内外航运专家、学者在“研究中心”从事研究工作提供必要条件，形成向世界开放的管理模式。
- 拥有中国航运数据库和港航大数据实验室，提供航运电商、航运大数据、航运传真等航运信息化方面的研究和咨询服务。努力成为在国内外有影响的港口和航运信息与数据中心。
- 组织国内外与港口和航运相关的高端论坛。
- 举办各类高层次、国际化的港口和航运人才的培训和讲座。
- 出版中英文版的航运专业期刊和简报。
- 完成政府和社会提出的其他相关任务。



Primary Missions

Undertake public and private interest commissioned shipping and port projects; offer counseling and proposals to government authorities and shipping companies; and conduct cross-border collaborative research.

Follow the performance of shipping and port industry home and abroad; offer bilingual (English and Chinese) analysis and forecast reports; release China Shipping Prosperity Index.

Operate with a management mechanism that facilitates shipping and port experts and scholars to conduct research at SISI.

Possess China Shipping Database as well as Shipping & Port Big Data Laboratory; offer research and consultancy services in the field of shipping informatization e.g. shipping e-commerce, shipping big data; strive to be an influential maritime information and data center.

Organize international shipping and port conferences.

Conduct various high level training programs.

Publish shipping periodicals and bulletins in Chinese and/or English.

Accomplish other tasks entrusted by government and non-government institutions.

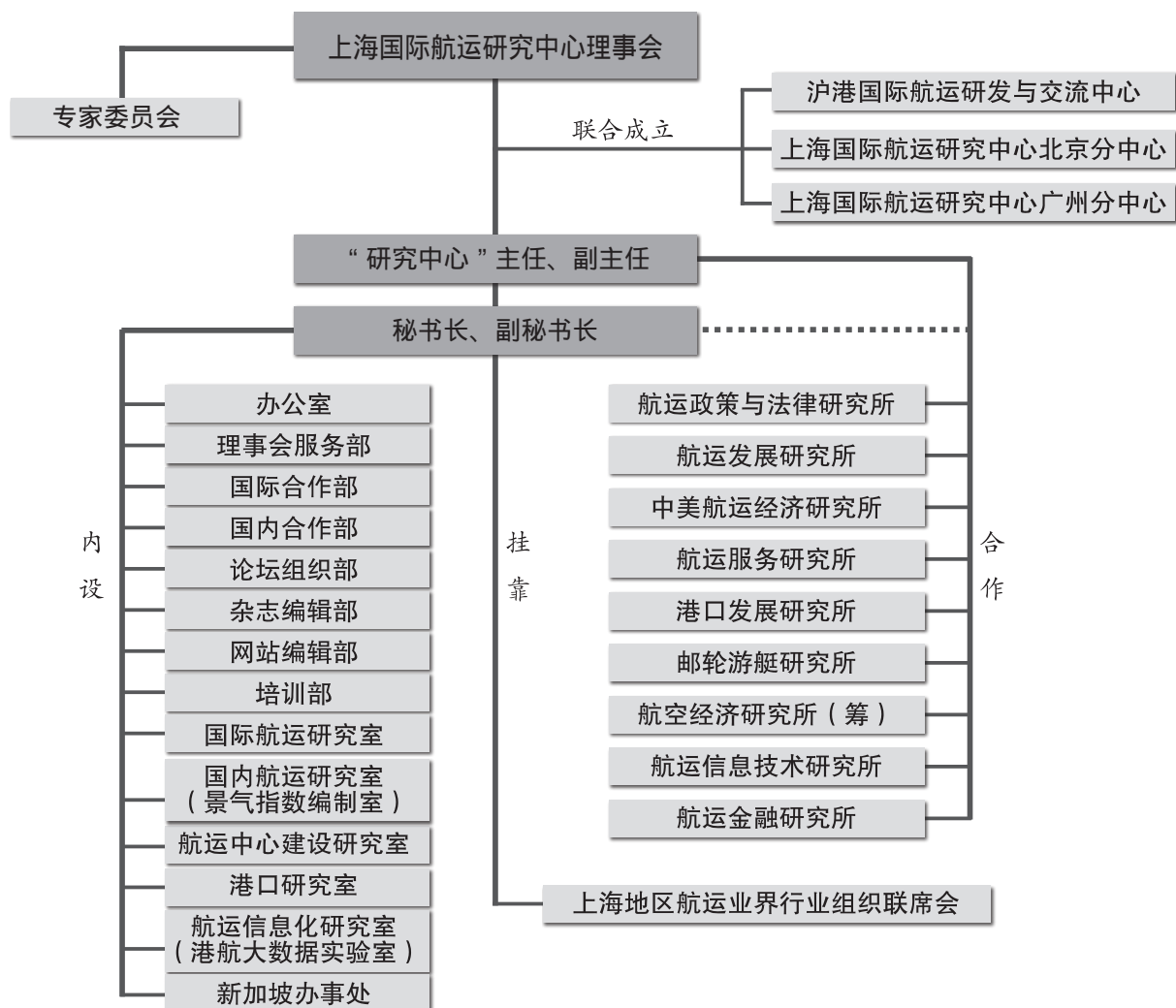




机构设置

○ 挂靠单位：上海海事大学

○ 上海国际航运研究中心运行机构



○ 基本架构

决策机构：理事会

核心决策层：理事长会议（包含理事长单位和副理事长单位，由23家单位组成）

第二届理事长单位：上海国际港务(集团)股份有限公司

● **Basic Structure**

Decision-Making Body: SISI Council

Core Circle: Council Chair Assembly (held by council chair unit and vice council chair units, altogether 23 entities)

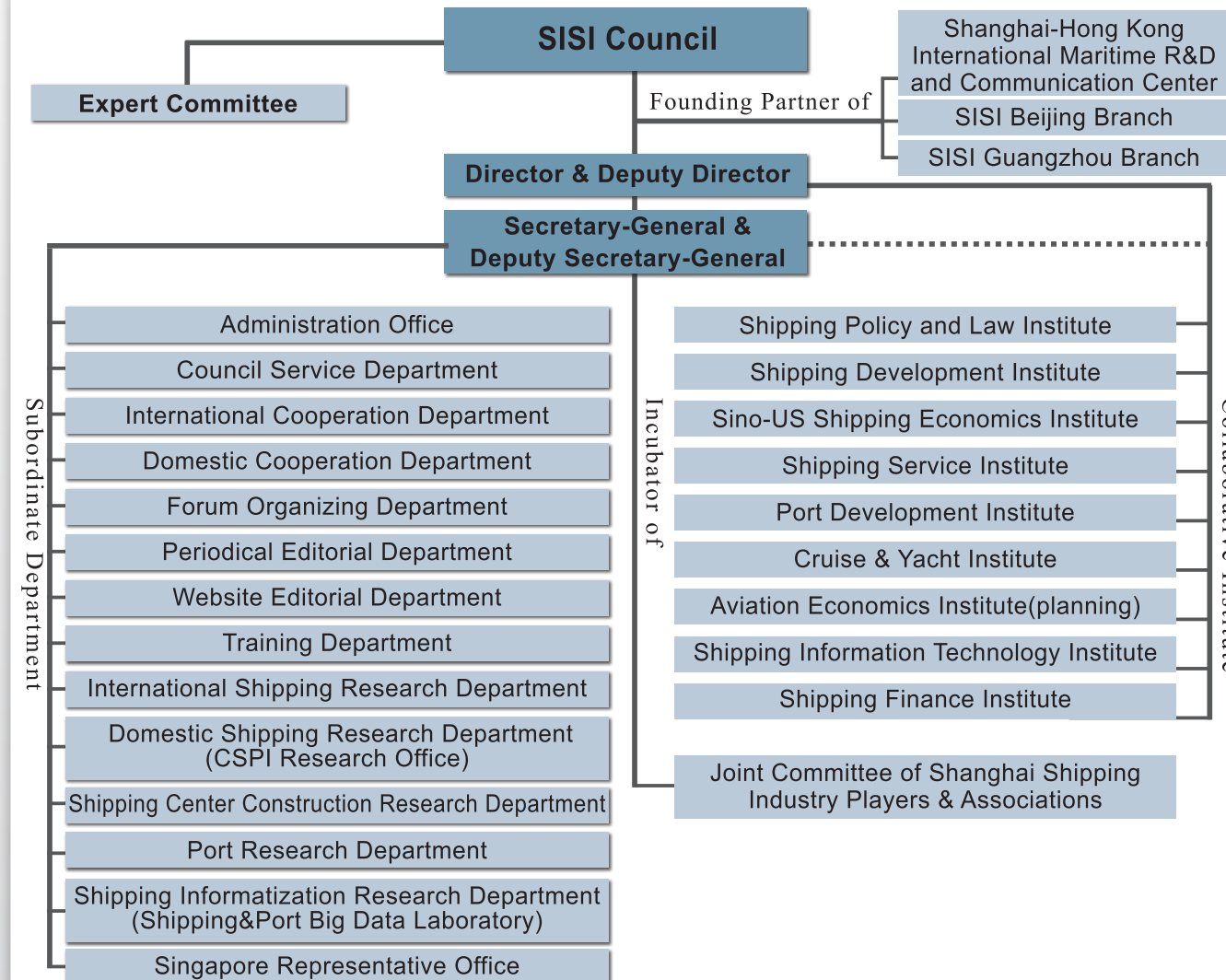
Second Session Council Chair Unit: Shanghai International Port (Group) Co., Ltd.



Organization Structure

● **Affiliated to:** Shanghai Maritime University

● **Organization Chart**



名誉理事长：

钱永昌

Honorary Chair:

QIAN Yongchang

交通部前部长，中国交通运输协会会长
Former Minister of Transport PRC,
President of China Communications and
Transportation Association



第二届理事长：

陈戌源

Second Session Council

Chair:

CHEN Xuyuan

上海国际港务（集团）股份有限公司党委书记、董事长
President and Party Secretary of Shanghai
International Port (Group) Co., Ltd.



机构设置

基本架构

日常管理运行机构



研究中心主任/Director

於世成 YU Shicheng

上海海事大学党委书记
Party Secretary of Shanghai Maritime University



副主任/Deputy Director

张林 ZHANG Lin

上海市交通委员会副主任
Deputy Director of Shanghai Municipal Transportation Commission



副主任/Deputy Director

徐彬 XU Bin

上海市虹口区人民政府副区长
Deputy District Head of Hongkou, Shanghai



书记、副秘书长/Deputy Secretary-General

李钢 LI Gang

上海海事大学副教授
Associate Professor of Shanghai Maritime University

副秘书长/Deputy Secretary-General

施正伟 SHI Zhengwei

上海市交通委员会航运发展处处长
Director of Shipping Development Division, Shanghai Municipal Transportation Commission



副主任/Deputy Director

袁雯 YUAN Wen

上海市教育委员会副主任
Deputy Director of Shanghai Municipal Education Commission



副主任/Deputy Director

肖宝家 XIAO Baojia

上海海事大学副校长
Vice President of Shanghai Maritime University



秘书长/Secretary-General

真虹 ZHEN Hong

上海海事大学教授
Professor of Shanghai Maritime University



副秘书长/Deputy Secretary-General

张婕姝 ZHANG Jieshu

上海海事大学教授
Professor of Shanghai Maritime University

副秘书长/Deputy Secretary-General

许开宇 XU Kaiyu

上海市教育委员会科技发展中心主任
Director of Science and Technology Development Center of Shanghai Municipal Education Commission



Organization Structure

Basic Structure Daily Management Body

副秘书长/Deputy Secretary-General

井艳 JING Yan

上海市交通委员会航运发展处副处长
Deputy Director of Shipping Development Division, Shanghai Municipal Transportation Commission

副秘书长/Deputy Secretary-General

张萍 ZHANG Ping

上海市虹口区航运服务办公室主任
Director of Shanghai Municipal Hongkou District Shipping Service Office

北京分中心主任/SISI Beijing Branch Director

徐萍 XU Ping

交通运输部科学研究院副总工程师
Deputy Chief Engineer of China Academy of Transportation Sciences

秘书长助理/Assistant Secretary General

戴瑾 DAI Jin

上海海事大学
Shanghai Maritime University

副秘书长/Deputy Secretary-General

崔远见 CUI Yuanjian

上海市金融服务办公室综合协调处副处长
Deputy Director of Comprehensive Coordination Department of Shanghai Municipal Financial Service Office

副秘书长/Deputy Secretary-General

丁嵩冰 DING Songbing

上海国际港务（集团）股份有限公司/战略研究部副总经理
Vice-general manager of Strategic Research Department, Shanghai International Port (Group) Co.,Ltd.

副处级调研员/Vice Consultant

李玲 LI Ling

上海海事大学
Shanghai Maritime University

秘书长助理/Assistant Secretary General

赵楠 ZHAO Nan

上海海事大学
Shanghai Maritime University



上海国际航运研究中心秘书处日常运行班子成员：张婕姝、李玲、真虹、李钢、戴瑾、赵楠（从左到右）
Daily management staff of SISI secretariat: ZHANG Jieshu, LI Ling, ZHEN Hong, LI Gang, DAI Jin, ZHAO Nan (from left to right)



直属机构

办公室	主任：戴 瑾（兼）	主任助理：费缨花
理事会服务部	主任：陆玮玲	
国际合作部	主任：陆玮玲（兼）	
国内合作部	主任：陈 丝	
论坛组织部	主任：戴 瑾（兼）	
杂志编辑部	执行主编：茅伯科	主任：刘征宇
网站编辑部	主任：徐 凯（兼）	
培训部	主任：陆玮玲（兼）	
国际航运研究室	主任：张永锋	
国内航运研究室 (景气指数编制室)	主任：周德全	
航运中心建设研究室	主任：金嘉晨	
港口研究室	主任：赵 楠	
航运信息化研究室 (港航大数据实验室)	主任：徐 凯	



Subordinate Departments

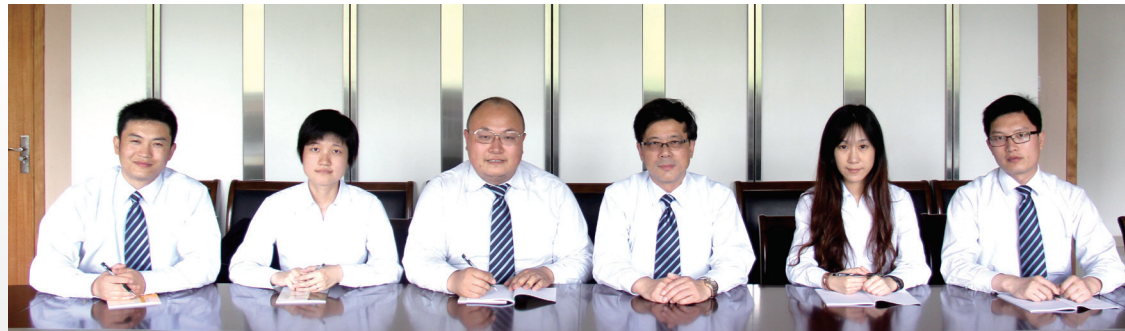
Administration Office	Director: DAI Jin (part-time) / Assistant Director: FEI Yinghua
Council Service Department	Director: LU Weiling
International Cooperation Department	Director: LU Weiling (part-time)
Domestic Cooperation Department	Director: CHEN Si
Forum Organizing Department	Director: DAI Jin (part-time)
Editorial Department	Executive Chief Editor: MAO Boke / Director: LIU Zhengyu
Website Editorial Department	Director: XU Kai (part-time)
Training Department	Director: LU Weiling (part-time)
International Shipping Research Department	Director: ZHANG Yongfeng
Domestic Shipping Research Department (CSPI Research Office)	Director: ZHOU Dequan
Shipping Center Construction Research Department	Director: JIN Jiachen
Port Research Department	Director: ZHAO Nan
Shipping Informatization Research Department (Shipping&Port Big Data Laboratory)	Director: XU Kai



机构设置

○ 专职研究队伍

以真虹教授领衔的研究团队承担了大量的政府和港航企业委托的咨询课题，咨询项目几乎遍及中国沿海和沿江地区，并在国际上开展合作研究。承担咨询研究服务工作的主要是5个研究室。主要咨询研究服务内容：国际航运中心建设，航运产业发展政策，高端航运服务业发展与规划，航运企业发展战略，国际航运比较，航运市场分析；区域港口发展战略与规划，港口发展政策，港口企业经营策略，港航信息化，港航大数据，港航运营仿真等。



周德全、金嘉晨、徐凯、真虹、赵楠、张永锋（从左到右）

Zhou Dequan, Jin Jiachen, Xu Kai, Zhen Hong, Zhao Nan, Zhang Yongfeng (from left to right)

秘书长：真虹 **邮箱：**shzhenhong@gmail.com

书记、副秘书长：李钢 **邮箱：**shshligang@gmail.com

副秘书长：张婕姝 **邮箱：**jszhang@126.com

国际航运研究室

主任：张永锋 **邮箱：**mouse5172@163.com

主要产品：国际集装箱市场报告、国际干散货市场报告、全球航运发展趋势分析报告等。

国内航运研究室、中国航运景气指数编制室

主任：周德全 **邮箱：**dqzhou@sisi-smu.org

主要产品：中国航运景气报告、干散货海运景气报告、沿海干散货市场分析报告、内贸集装箱市场分析报告等。

航运中心建设研究室

主任：金嘉晨 **邮箱：**jk.jessie@gmail.com

主要产品：上海国际航运中心建设年度报告、上海国际航运中心建设工作简报、航运服务业发展报告等。

港口研究室

主任：赵楠 **邮箱：**rockyzhao1986@163.com

主要产品：全球港口发展报告、全球港口综合发展指数、全球最具发展潜力集装箱港口排名、中国集装箱港口服务水平综合评价等。

航运信息化研究室、港航大数据实验室

主任：徐凯 **邮箱：**kernxu@gmail.com

主要产品：中国航运数据库、港航大数据实验室、中国海运信息网、航运手机报、全球船舶监控与分析平台（基于大数据的船联网解决方案）等。



Organization Structure

● Research Team

Led by Professor Zhen Hong, five research departments of SISI have undertaken a large number of consulting projects commissioned by government and shipping/port enterprises throughout China and joint research projects with overseas academic circle on a wide range of subjects like shipping center construction, shipping and port policy, development and planning of high-end shipping service and regional ports, strategy for shipping/port companies, comparison of global shipping clusters, shipping market analysis, and shipping information technology, big data and simulation, etc.

Secretary-General: ZHEN Hong **Email:** shzhenhong@gmail.com

Deputy Secretary-General: LI Gang **Email:** shshligang@gmail.com

Deputy Secretary-General: ZHANG Jieshu **Email:** jszhang@126.com

International Shipping Research Department

Director: ZHANG Yongfeng **Email:** mouse5172@163.com

Products: International Container Shipping Market Analysis Report, International Dry Bulk Shipping Market Analysis Report, International Shipping Development Trend Analysis Report, etc.

Domestic Shipping Research Department & CSPI Research Office

Director: ZHOU Dequan **Email:** dqzhou@sisi-smu.org

Products: China Shipping Prosperity Report, China Dry Bulk Shipping Prosperity Report, China Coastal Dry Bulk Shipping Market Analysis Report, China Domestic Trade Container Shipping Market Report, etc.

Shipping Centre Construction Research Department

Director: JIN Jiachen **Email:** jk.jessie@gmail.com

Products: Annual Report of Shanghai International Shipping Centre Construction, Newsletter of Shanghai International Shipping Centre Construction, Shipping Service Industry Development Report, etc.

Port Research Department

Director: ZHAO Nan **Email:** rockyzhao1986@163.com

Products: Global Port Development Report, Global Port Development Index (GPDI), Ranking of Global Container Ports with Most Potential, Overall Assessment of China Container Ports Service, etc.

Shipping Informatization Research Department, Shipping & Port Big Data Laboratory

Director: XU Kai **Email:** kernxu@gmail.com

Products: China Shipping Database, Shipping & Port Big Data Laboratory, China Shipping Information Website, Mobile Shipping News, Global Vessel Monitoring and Analysis Platform, etc.



机构设置

基本架构

合作研究机构

研究所	所长	常务副所长	副所长	所长助理
航运政策与法律研究所	叶红军 中国海运（集团）总公司总法律顾问	沈秋明	林 江	
航运发展研究所	王海民 中远集运总经理	王明峰 战发部总经理	李 钢（兼）	
中美航运经济研究所	Shmuel Yahalom 美国纽约州立大学海运学院教授		关常谦 沙 梅	於 军
航运服务研究所	陆俊山 大连远洋运输公司 党委书记	王逸奇	罗贵华 葛基中 王学锋	
港口发展研究所	真 虹（兼）		茅伯科	
邮轮游艇研究所	肖宝家 上海海事大学副校长	郑炜航	程爵浩	
航运信息技术研究所		王晓峰		刘 晋
航运金融研究所	徐众华 中国建设银行上海市分行副行长	甘爱平	包晓林 肖 成 牛卫东 童志康	
航空经济研究所（筹）				姜超雁



Organization Structure

Basic Structure

Collaborative Research Institutes

Institute	Director	Managing Deputy Director	Deputy Director	Assistant Director
Shipping Policy and Law Institute	YE Hongjun	General Legal Counsel of China Shipping (Group) Company SHEN Qiuming	LIN Jiang	
Shipping Development Institute	WANG Haimin	Managing Director of COSCON WANG Mingfeng	LI Gang (part-time) Director of Strategic Development Dept., COSCON	
Sino-U.S. Shipping Economics Institute	Shmuel Yahalom	Professor& Director of Research at SUNY Maritime College	GUAN Changqian SHA Mei	YU Jun
Shipping Service Institute	LU Junshan	CPC Party Secretary of Dalian Ocean Shipping Company WANG Yiqi	LUO Guihua GE Jizhong WANG Xuefeng	
Port Development Institute	ZHEN Hong (part-time)		MO Boke	
Cruise & Yacht Institute	XIAO Baojia	Vice President of Shanghai Maritime University ZHENG Weihang	CHENG Juehao	
Shipping Information Technology Institute		WANG Xiaofeng		LIU Jin
Shipping Finance Institute	XU Zhonghua	Vice President of China Construction Bank Shanghai Branch GAN Aiping	BAO Xiaolin XIAO Cheng NIU Weidong TONG Zhikang	
Aviation Economics Institute (planning)				JIANG Chaoyan





机构设置

○ 基本架构

挂靠机构

上海航运业界行业组织联席会议

秘书长: 蔡美义

副秘书长: 张云龙

Affiliates

Joint Committee of Shanghai Shipping Industry Players & Associations

Secretary-General: CAI Meiyi

Deputy Secretary-General: ZHANG Yunlong



Organization Structure

● Basic Structure

联合成立的机构

沪港国际航运研发与交流中心

第二届理事会主席: 曹文锦

秘书长: 张婕姝

Founding Partner of

Shanghai-Hong Kong International Maritime R&D and Communication Center

Second President of Center: CAO Wenjin

Secretary-General: ZHANG Jieshu



上海国际航运研究中心北京分中心

主任: 徐萍

SISI Beijing Branch

Director: XU Ping





机构设置

○ 基本架构

专家委员会（名单）

主任：马硕

常务副主任：黄有方

副主任：王明志、朱建华、孙家康、叶伟龙、张国发、张页、孔凡邨（排名不分先后）

委 员（排名不分先后）：

马 硕：联合国世界海事大学副校长、教授
王明志：交通运输部水运局副局长
朱建华：原上海交通运输和港口管理局巡视员（正局级）
顾性泉：原上海市政府发展研究中心书记
张立勇：原中远北美公司总经理
王海平：《港口经济》主编，原天津港务局副局长
孙家康：中国远洋运输（集团）总公司副总经理
叶伟龙：中国远洋运输（集团）总公司副总经理
张国发：中国海运（集团）总公司副总裁
张 页：上海航运交易所总裁
金义松：中国海运（韩国）株式会社总经理
张 欣：上海国际港务（集团）股份有限公司振东集装箱码头分公司总经理
茅伯科：原上海市交通运输和港口局交通保障协调处正处级调研员，上海海事大学客座教授
杜麒麟：原中国港口协会副秘书长
陈德明：上海船东协会专职副会长兼秘书长
李林海：上海市国际货运代理行业协会秘书长
郑炜航：中国交通运输协会邮轮游艇分会副会长
胡 昊：上海交通大学教授
Shmuel Yahalom：美国纽约州立大学海运学院运输与物流研究中心主任
关常谦：美国商船学院航运系主任
刘巽良：众盟航运咨询（上海）有限公司总经理
徐秋敏：中外运集装箱运输有限公司总经理
刘桂云：宁波大学物流与港口研究所所长，教授
贾大山：交通部水运科学研究院副院长
许长新：河海大学教授
陈晶莹：上海金融学院副院长
李九领：上海海关学院教授

许孙童：中国外运华东有限公司副总经理
梁 宪：中国国际海运集装箱（集团）股份有限公司高级顾问 原招商局集团研究部总经理
蔡美义：原上海港务局副局长
沈康辰：上海海事大学教授（原上海海运学院院长）
孔凡邨：上海海事大学副校长
肖宝家：上海海事大学副校长
蔡存强：原上海海事大学副校长
宗蓓华：上海海事大学教授
真 虹：上海海事大学教授、上海国际航运研究中心秘书长
陈伟炯：上海海事大学海洋科学与工程学院书记
徐众华：中国建设银行上海市分行副行长
叶红军：中国海运（集团）总公司总法律顾问
姜卫建：华泰保险经纪有限公司上海分公司总经理
罗勋杰：上港集团洋山四期建设指挥部副总指挥
程泽坤：中交第三航务工程勘察设计院总工程师
张 戎：同济大学交通运输工程学院教授
赵劲松：华东政法大学国际航运法律学院院长
童孟达：宁波港股份有限公司总经济师
徐 萍：交通运输部科学研究院副总工程师
罗 萍：国家发展和改革委员会综合交通运输研究所主任
钱 智：上海市人民政府发展研究中心改革研究处处长
Sergio prete：意大利塔兰托港务局局长
佟成权：中国海运（集团）总公司 董事会办公室/办公厅、研究中心主任
聂 清：上海对外经贸大学副校长
郑金海：河海大学交通学院副院长
沈满堂：中海集团原法律总顾问



Organization Structure

● Basic Structure

Expert Committee

Director: MA Shuo

Managing Deputy Director: HUANG Youfang

Deputy Director: WANG Mingzhi, ZHU Jianhua, SUN Jiakang, YE Weilong, ZHANG Guofa, ZHANG Ye, KONG Fancun
(listed in a random order)

Members (listed in a random order):

MA Shuo, Professor & Vice President of World Maritime University
WANG Mingzhi, Vice Director of Water Bureau of China's Ministry of Transport
ZHU Jianhua, Bureau Head Level Inspector of Shanghai Municipal Transport and Port Authority
GU Xingquan, Former Party Secretary of Development Research Center of Shanghai Municipal Government
ZHANG Liyong, Former General Manager of COSCO North America
WANG Haiping, Chief Editor of Port Economy, Former Deputy Director of Tianjin Port Authority
SUN Jiakang, Deputy General Manager of China Ocean Shipping (Group) Company
YE Weilong, Deputy General Manager of China Ocean Shipping (Group) Company
ZHANG Guofa, Vice President of China Shipping (Group) Company
ZHANG Ye, President of Shanghai Shipping Exchange
JIN Yisong, General Manager of China Shipping (Korea) Agency Co., Ltd.
ZHANG Xin, Managing Director of Shanghai International Port(Group)Co.,Ltd. Zhendong Container Terminal Branch
MAO Boke, Former Senior Researcher of Shanghai Municipal Transport and Port Authority& SMU Visiting Professor
DU Qidong, Former Deputy Secretary-General of China Ports Association
CHEN Deming, Vice President and Secretary General of Shanghai Shipowners' Association
LI Linhai, Secretary-General of Shanghai Freight Forwarders Association
ZHENG Weihang, Vice President of China Cruise& Yacht Industry Association, China Communications and Transportation Association
HU Hao, Professor of Shanghai Jiaotong University
Shmuel Yahalom, Director of Transportation Research Center of State University of New York Maritime College
GUAN Changqian, Head of Shipping Department, United States Merchant Marine Academy
LIU Xunliang, General Manager of Zhongmeng Shipping Consulting (Shanghai) Co., Ltd.
XU Qiumin, General Manager of Sinotrans Container Lines Co., Ltd.
LIU Guiyun, Professor & Director of Logistics and Port Research Institute, Ningbo University
JIA Dashan, Vice President of China Waterborne Transport Research Institute
XU Changxin, Professor of Hohai University
CHEN Jingying, Vice President of Shanghai Finance University
LI Jiuling, Professor of Shanghai Customs College

XU Suntong, Vice General Manager of Sinotrans Eastern Co., Ltd.
LIANG Xian, Senior Advisor of China Shipping Container Lines Co., Ltd. Former General Manager of Research Department of China Merchants Group
CAI Meiyi, Former Deputy Director of Shanghai Port Authority
SHEN Kangchen, Professor and Former President of Shanghai Maritime University
KONG Fancun, Vice President of Shanghai Maritime University
XIAO Baojia, Vice President of Shanghai Maritime University
CAI Cunqiang, Former Vice President of Shanghai Maritime University
ZONG Beihua, Professor of Shanghai Maritime University
ZHEN Hong, Professor of Shanghai Maritime University, Secretary-General of Shanghai International Shipping Institute
CHEN Weijiong, CPC Party Secretary of College of Ocean Science and Engineering, Shanghai Maritime University
XU Zhonghua, Vice President of China Construction Bank Shanghai Branch
YE Hongjun, General Legal Counsel of China Shipping (Group) Company
JIANG Weijian, General Manager of Huatai Insurance Agency & Consultant Service Ltd. Shanghai Branch
LUO Xunjie, Deputy Chief Commander of Yangshan Deepwater Port Phase IV Construction Command Office
CHENG Zekun, Chief Engineer of CCCC Third Harbor Consultant Co., Ltd.
ZHANG Rong, Professor of Traffic and Transportation Engineering College, Tongji University
ZHAO Jinsong, Dean of International Shipping Law School, East China University of Political Science and Law
TONG Mengda, Chief Economist of Ningbo Port Co., Ltd.
XU Ping, Deputy Chief Engineer of China Academy of Transportation Sciences
LUO Ping, Director of Comprehensive Transportation Institute, National Development and Reform Commission
QIAN Zhi, Head of Reform Research Division of Development Research Center Shanghai Municipal Government
Sergio Prete, President of Taranto Port Authority
TONG Chengquan, Director of the Board of Directors Office, China Shipping (Group) Company
NIE Qing, Vice President of Shanghai University of International Business and Economics
ZHENG Jinhai, Deputy Dean of Transportation College, Hohai University
SHEN Mantang, Former General Legal Counsel of China Shipping (Group) Company



主要服务

Main Products & Services

- “航运市场分析报告”（当年回顾与下年展望），包括：国际集装箱班轮运输市场、国际干散货运输市场、中国沿海主要干散货运输市场、内贸集装箱航运市场分析报告、中国邮轮运输市场、中国航运金融市场、全球航运发展报告、全球航空发展等。



Reports on shipping market review and forecast covering international container liner market, international dry bulk shipping market, China coastal dry bulk shipping market, China domestic trade container shipping market, China cruise market, China shipping finance market, global shipping development, global aviation development, etc.

- 编制及发布“中国航运景气指数（CSPI）”和“中国干散货航运景气指数（CDPI）”，并依据指数发布“中国航运景气报告”、“中国干散货航运景气报告”。



China Shipping Prosperity Index (CSPI) and China Shipping Prosperity Report; China Dry Bulk Shipping Prosperity Index (CDPI) and China Dry Bulk Shipping Prosperity Report

- “全球港口发展报告”，并编制“全球港口综合发展指数”、“集装箱港口成长性指数”、“中国集装箱港口服务水平综合评价指数”等，为港口界提供动态信息及先进的经营管理经验。



Global Port Development Report; Global Port Comprehensive Development Index, Container Terminal Growth Potential Index, Comprehensive Evaluation Index of Service Level for China Container Terminal

- 接受国内外政府、企业和国际组织委托，围绕港口、航运、航空、物流和邮轮游艇等领域，开展发展战略、项目规划、政策制定和 market 分析等的研究和咨询。

Research and consultation entrusted by government bodies and non-government institutions home and abroad on projects concerning development strategy, policy making and market analysis, etc. in fields like shipping, port, aviation, logistics, cruise and yacht industry



- 开展国际合作。

International collaboration



- 定期的航运和港口发展交流活动（每月举行，形式有讲座、研讨、沙龙等）。

Regular shipping and port exchange activities in the form of lectures, seminars and salons on a monthly basis



- 组织高层次、国际化的高端论坛，每年举办“SISI国际港航发展论坛”。

Organizing reputable international conferences highlighting SISI International Shipping & Port Development Forum





主要服务

Main Products & Services

- 设立“上海国际航运研究中心”研究基金，为政府提供政策研究，为企业提供决策咨询。

Managing Shanghai International Shipping Institute Research Fund envisioned to facilitate the decision-making of government authorities and industry players



- 《航运评论》、《海运情报》、《中国港航发展评论（英文）》等纸质和电子刊物的出版。

Publishing professional periodicals Shipping Review(in paper format), Maritime Intelligence (in paper format), and China Shipping and Ports (English e-zine)



- 组织高级培训项目，包括：受政府、企业的委托举办专项培训，以及研究中心根据业界需要组织的培训项目。

Conducting high end training programs entrusted by government agencies and shipping companies, as well as those deemed by SISI as crucial for industrial development



- 港航信息服务，包括：航运研究中心官网（上海国际航运中心建设要闻，境内外其它航运中心发展动态，观点聚焦，航运词典和航运数据统计等）、中国航运数据库（拥有中国港航数据240多万条）、中国海运信息网、航运手机报、中印经贸网、中新经贸网等，建有港航大数据实验室。

Online information service including SISI's official website (with news and reports covering Shanghai international shipping center development, expert observations, shipping market analysis reports, shipping dictionary, etc.), China Shipping Database(with over 2.4 million pieces of data), China Shipping Information Website, shipping mobile news, Sino-Singapore Economic and Trade Cooperation Website, Sino-Indonesia Economic and Trade Cooperation Website and Shipping & Port Big Data Laboratory



上海国际航运研究中心旗下网站清单 Website List

名称 Website	简介 Introduction	网址 URL
上海国际航运研究中心 Shanghai International Shipping Institute	中/英文官方门户网站 SISI's bi-lingual portal	www.sisi-smu.org
中国海运信息网 China Shipping Information Website	航运信息、资料门户 China's shipping information and data portal	www.chinashippinginfo.net
中国航运数据库 China Shipping Database	数据服务平台 Domestic shipping data service platform	www.shippingdata.cn
中国港航发展评论 China Shipping and Ports	全英文电子刊物 English e-magazine, your gateway to China shipping and ports update	www.csapchina.com
中国航运景气指数 China Shipping Prosperity Index	CSPI指数首发网站 CSPI official website	sisi-smu.org/cspi/
中国—新加坡经贸合作网 Sino-Singapore Economic and Trade Cooperation Website	为中国、新加坡两国贸易往来提供信息服务 China-Singapore bilateral trade information services	www.csc.mofcom-mti.gov.cn
中国—印尼经贸合作网 Sino-Indonesia Economic and Trade Cooperation Website	为中国、印尼两国贸易往来提供信息服务 China-Indonesia bilateral trade information services	www.cic.mofcom.gov.cn



主要业务部门电话（总机号：+86 21 65853850 转各部门） Switchboard Number: +86 21 65853850

产品 Research Report/Periodical/Database/Website	分机号 Extension	部门 Department
国际集装箱班轮市场报告 International Container Liner Market Report	8025	国际航运研究室 International Shipping Research Department
中国航运发展报告 China Shipping Industry Development Report		
国际干散货运输市场报告 International Dry Bulk Shipping Market Report		
中国沿海主要干散货运输市场报告 Chinese Coastal Dry Bulk Shipping Market Report	8039	国内航运研究室 Domestic Shipping Research Department
中国航运景气报告 China Shipping Prosperity Report		
中国内贸集装箱航运市场报告 China Domestic Trade Container Shipping Market Report		
全球港口发展报告 Global Port Development Report	8033	港口研究室 Port Research Department
中国沿海集装箱港口服务水平综合评价指数 Comprehensive Evaluation Index of Service Level for China Coastal Container Ports		
中国邮轮发展报告 China Cruise Development Report	8016	邮轮游艇研究所 Cruise & Yacht Research Institute
中国邮轮市场分析发展研究报告 China Cruise Market Analysis Research Report		
全球航空发展报告 Global Aviation Industry Development Report	8038	航空经济研究所 Aviation Economics Institute
航运评论 Shipping Review (Periodical)	8032	杂志编辑部 Periodical Editorial Department
海运情报 Maritime Intelligence (Periodical)		
中国港航发展评论（英文电子刊） China Shipping and Ports (English E-zine)		
中国航运数据库 China Shipping Database	8006	网站编辑部 航运信息化研究室 Website Editorial Department Shipping Informatization Research Department
港航大数据实验室 Shipping & Port Big Data Laboratory		
中国海运信息网 China Shipping Information Website		
中国—新加坡经贸合作网 Sino-Singapore Economic and Trade Cooperation Website		
中国—印尼经贸合作网 Sino-Indonesia Economic and Trade Cooperation Website		



主要服务

Main Products & Services



上海国际航运研究中心近几年承担政府和企业的部分研究咨询项目
Part of Research Projects Undertaken by SISI

序号 Serial number	项目名称 Project name
01	长江三角洲港口一体化模式的研究 Study of Port Integration Mode in Yangtze River Delta
02	完善上海国际航运中心建设推进机制及资源整合研究 Study of Improving the Promoting Mechanism and Resource Integration for Shanghai International Shipping Center
03	北外滩航运服务集聚区发展规划 Development Program of Shipping Service Cluster in North Bund, Shanghai
04	青岛市邮轮经济发展总体规划 Overall Plan on the Cruise Economy in Qingdao
05	第四代港口及其经营管理模式研究 Research on 4th Generation Ports and the Operation and Management Modes
06	马鞍山港口（集团）有限公司发展战略与“十二五”规划研究 Development Strategy Planning and the 12th Five-Year Plan for Ma An Shan City Harbor (Corp.) Limited Liability Company
07	在国际航运发展综合试验区实施“地主港”模式和“境内关外”政策的研究 Study of Implementing the “Landlord Port” Mode and “Within the Boundary, Outside the Customs” Policy in the Comprehensive Pilot Zone for International Shipping Development
08	舟山中昌海运三年运力发展规划（2010–2012） Three-year Shipping Capacity Development Plan of Zhoushan Zhongchang Shipping Co., Ltd.
09	“国际航运发展综合试验区”内涵及相关政策的研究 Study of the Connotations and Relevant Policies Concerning the Comprehensive Pilot Zone for International Shipping Development
10	舟山港务集团有限公司“十二五”发展规划 Development Strategies and the 12th Five-Year Plan of Zhoushan Port Group
11	烟台市港口物流产业发展战略规划研究 Research on Strategic Planning of Port Logistics Industry in Yantai
12	上海国际航运中心建设“十二五”发展规划 The 12th Five-Year Development Plan of Shanghai International Shipping Center
13	江阴建设区域性枢纽港战略研究（2011–2015） Development Plan of Jiangyin Hub Port（2011–2015）
14	我国与建设航运中心相关的服务贸易市场准入长期战略与实施方案研究 Long-term Strategies and Implementation Plan on the Access of Service Trade Markets Related to Shipping Center Construction in China
15	湖州港口物流发展战略研究 Research on Strategic Development of Huzhou Port Logistics
16	上海国际航运经纪发展政策和规范管理研究 Study of Policies and Standard Management of International Shipping Agency Development in Shanghai
17	芜湖市水运发展战略研究 Research on the Waterway Transport Development Strategies of Wuhu
18	南京港口物流“十二五”发展规划 The 12th Five-Year Plan of Nanjing Port Logistics
19	山东海运股份有限公司“十二五”规划 The 12th Five-Year Plan for Shandong Marine Transport Co, Ltd.
20	“十二五”上海港航（海港）发展规划 Development Plan for Shanghai Port & Shipping Industry (Seaport) in the 12th Five-year Period
21	上海国际航运中心建设对上海经济发展的影响评价研究 Research on Impact Assessment of Shanghai International Shipping Center Construction on City Economic Development
22	杭州加快港口转型发展的战略研究 Strategic Research on Accelerating Transformation of Hangzhou Port
23	加快完善上海航运服务产业链研究 Study of Faster Improvement of Shanghai Shipping Service Industry Chain
24	武汉长江中游航运中心建设发展战略纲要 Strategic Outline for Developing Wuhan into a Shipping Center Located in the Middle Reaches of Yangtze River
25	港口拖轮经营管理规定 Regulations on Port Towboat Operation

序号 Serial number	项目名称 Project name
26	关于提高本市货运物流效率水平对策研究 Study of Measures to Improve Cargo Logistics Efficiency in Shanghai
27	高端航运服务产业链研究 Study of the High-end Shipping Service Industry Chain
28	全国船舶交易服务机构调研报告 Survey Report of Ship Transaction Service Institutions Nationwide
29	关于本市邮轮母港建设及邮轮产业发展若干问题研究 Study of Issues Concerning the Construction of Cruise Home Port and Development of Cruise Industry in Shanghai
30	关于规范本市游艇市场及游艇码头管理若干问题研究 Study of Issues on Standardizing the Yacht Market and Marina Management in Shanghai
31	我国沿海港口资源整合研究 Study of Coastal Port Resource Integration in China
32	广西实施港航强桂战略的研究 Research on Strategies to Make Guangxi Province Stronger by Developing Shipping and Port Industry
33	安庆港口发展战略研究 Study of Anqing Port’s Development Strategy
34	关于优化调整国内航运市场管理方式研究 Study of Optimizing the Management Mode of Domestic Shipping Market
35	关于“营改增”对航运业的影响研究 Study of the Influence of Tax Reform on Shipping Industry
36	关于推进上海国际航运研究中心高端航运服务业发展的政策研究 Research on Policy to Promote the Development of High-end Shipping Service Industry in Shanghai
37	我国邮轮产业基金和中小航运企业资金池发展模式研究 Research on Development Model of China Cruise Industry Fund and Capital Pool for Small and Medium-sized Shipping Enterprises
38	上海港可持续发展若干重大问题研究 Research on Several Significant Issues concerning Sustainable Development of Shanghai Port
39	中国（上海）自由贸易试验区航运制度体系设计及实施效果跟踪研究 Research on Shipping System Design and Implementation Effect Follow-up in China（Shanghai）Pilot Free Trade Zone
40	上海国际航运中心建设“十三五”规划前期研究 Preliminary Research on the 13th Five-Year Plan of Shanghai International Shipping Center Construction
41	上海高端航运服务功能对外辐射研究 Research on Radiation Function of Shanghai High-end Shipping Service
42	21世纪海上丝绸之路与上海国际航运中心联动发展研究 Research on Correlative Effect between 21 st Century Maritime Silk Road and Shanghai International Shipping Center Construction
43	上海建设航运科技创新中心的路径研究 Research on the Path to Lead Shanghai to a Shipping and Science and Technology Innovation Center
44	2014年上海国际航运中心运行评估报告 Evaluation Report of 2014 Shanghai International Shipping Center Progress
45	中资企业经营沿海邮轮运输市场准入条件研究 Research on Access Qualification of Chinese Enterprises to Coastal Cruise Market
46	福建省自贸区建设和港航发展专题研究 Research on Building Fujian Pilot Free Trade Zone and Developing its Shipping and Port Industry
47	宁波港集团多元化、市场化、国际化发展研究 Research on Diversification, Marketization and Globalization of Ningbo Port Group
48	连云港综合发展战略研究 Overall Development Strategy of Lianyungang Port
49	依托天津自贸试验区政策创新及落地拓展天津港发展空间研究 Research on Expanding Development Space of Tianjin Port by Policy Innovation and Implementation Carried out in Tianjin Pilot Free Trade Zone
50	天津北方国际航运研究中心十三五规划 The 13th Five-Year Plan of Tianjin Northern International Shipping Center

上海国际航运研究中心竭诚欢迎您共同参与！

SHANGHAI INTERNATIONAL SHIPPING INSTITUTE
SINCERELY WELCOMES YOUR PARTICIPATION!



上海国际航运研究中心

Shanghai International Shipping Institute (SISI)

地址：上海市虹口区霍山路150号

Address: 150 Huoshan Road, Hongkou District,
Shanghai, P.R. China

邮编 / Post Code: 200082

办公室：费老师、童老师 / Reception Office: Ms. Fei, Mr. Tong

电话 / Tel: +8621-65355897, +8621-65853792

传真 / Fax: +8621-65373125

邮箱 / Email: yhfei@sisi-smu.org; tong@sisi-smu.org

网址 / Website: www.sisi-smu.org

